



COTTESLOE
COASTCARE

2019/20 Annual Report

30th August 2020

Mike Ewing

**With photos by Robyn Benken and graphics by
Sue and Rob Freeth**

CCA Mission

Complete restoration of the areas of remnant natural vegetation in Cottesloe within the next decade through our direct efforts and through advocacy and support of wider community efforts.

and ...

.... be willing and ready to try something new or different!

Cottesloe is about **400** hectares

Natural areas = **15.5** ha or

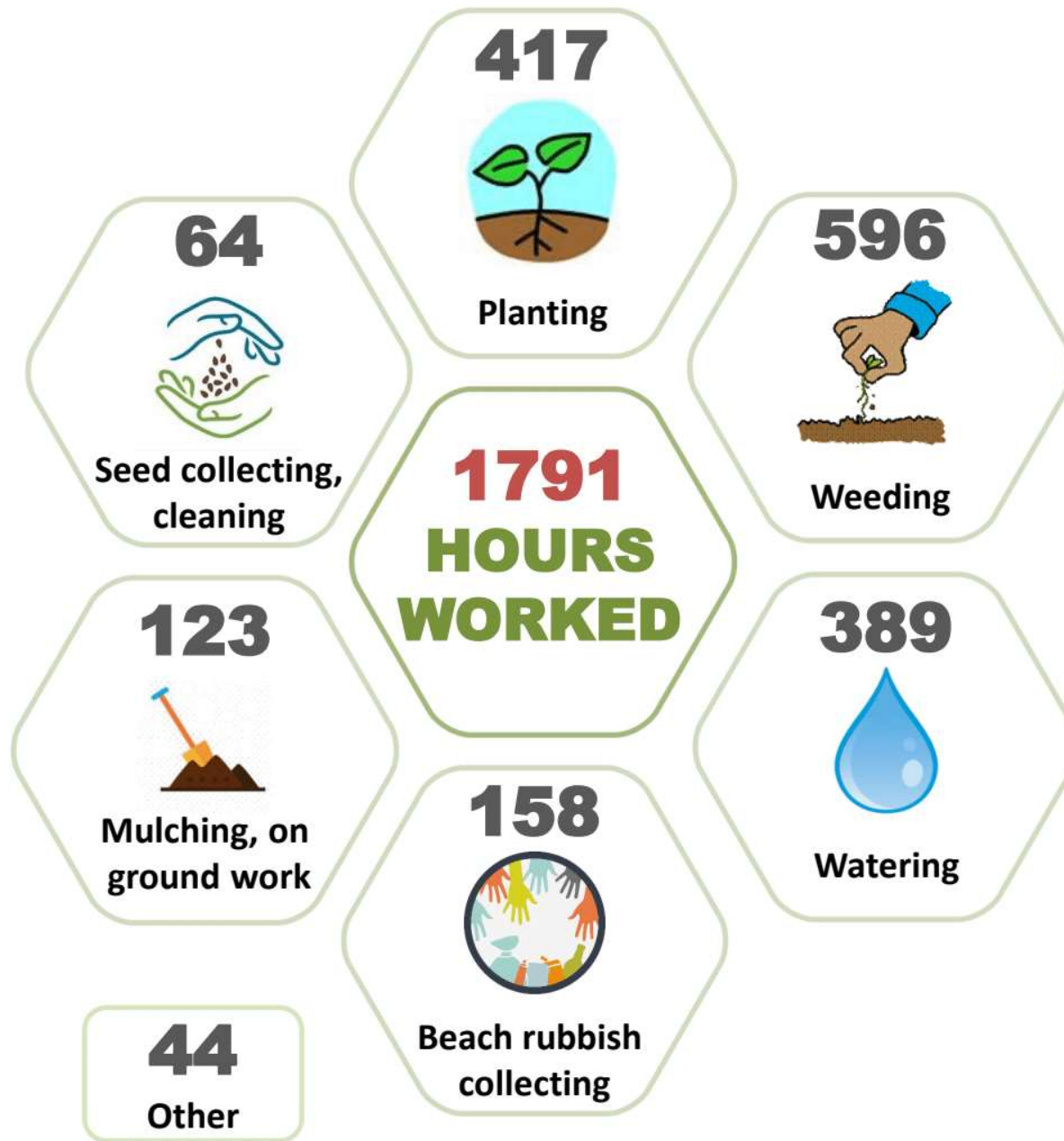
4% of Cottesloe's land area

90% is west of Marine Parade



Talk outline

- Activity summary
- Vlamingh – our big initiative
- Other on-ground work:
 - new areas
 - maintenance
- Innovations
- Our people
- Partners
- Recognition
- Acknowledgements

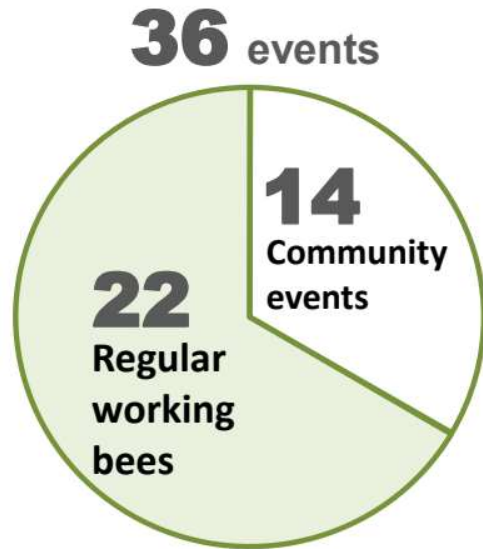


2019-2020

VALUE

1791 hrs @ \$30/hr

\$53,730



551 people from wider community engaged.
School, corporate and community groups.



2019-2020

1,791 volunteer hours



\$53,730 volunteer labour

\$49,771 grants and donations

Total \$103,501



3,500 plants planted

The Vlamingh initiative

- motivated by earlier success in the adjacent area (see below)



Vlamingh on the west of the coastal path at time of Victorian tea tree clearing – 2010 and showing the remnant tea trees in the background



Re-vegetated area at Vlamingh - 2018

Reviewing the Vlamingh Site and discussing the possibilities - 2019



Site preparation - savage attack on woody weeds (Victorian tea tree)



Contractors at play!



Some features – made possible with funding from the Minderoo Foundation Trust



The revegetation effort



Welcome to the Nature Discovery Space



A special place to connect with nature.
Cottesloe Coastcare has restored this site with local plants
to create habitat for local birds and wildlife.

Supported by the Town of Cottesloe, Celia Hammond MP and
the Communities Environment Program, and Minderoo Foundation.
Design and construction by Nature Based Play.



The finished product



Open and already in use



Early use has exceeded expectations



The baby whale has mutated to a hairy mammoth!

....."children who play in natural settings play in more diverse, imaginative and creative ways." (Nature Play WA)